



Builders demolishing the old toilet block

The Changing Face of Hertford Museum!

Building work for the redevelopment began on 9th March and good progress has been made. The exterior toilet block has been completely demolished and some of the interior walls in the Museum have been removed so that the building looks much like the old house it originally was when the Andrews brothers opened the Museum here in 1914.

A new 'Resource Room'!

The new Museum will have a Resource Room based on the ground floor on the left of the entrance (where the shop used to be located). This will be like a mini-archive reading room where Museum archive collections will be available, for example, local photographs, postcards and reference books. A selection of paper archives, such as election posters, will be contained in special drawers. There will also be three computer workstations for visitors situated near the resource room, funded by the Hidden Hertford project.



Designer's impression of the ground floor and the reception desk



A view into the first floor of the museum, March 2009

Staff are now busily preparing for the new displays which will reside on the first floor, covering themes such as 'growing up', 'work' and 'free time' in Hertford. The museum staff are keen to display as much of the vast collection as they can in the space available, so that visitors will want to keep coming back.



The first floor of the museum in 1918

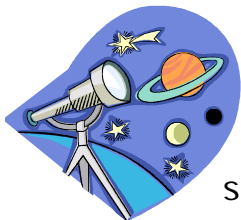
Blog! The staff of Hertford Museum have been blogging away on the new Blog site which can be found on www.hertfordmuseum.org. The Blog gives updates and photographs of all the goings-on with the museum development as well as where you can find us over the summer and all the community events and activities we are organising.

Hertford Museum
18 Bull Plain, Hertford
SG14 1DT
Tel: 01992 582686
Email: hertfordmuseum@btconnect.com
www.hertfordmuseum.org



HERTFORD MUSEUM
Inspiring Generations

Supported by Hertford Town Council



What to Watch Out for this Summer!

Shooting Stars and Space Dust! Thurs 28th May, 10.30-4pm, Sele Farm Community Centre. Come and find out about galaxies, black holes and shooting stars and make a clay extra-terrestrial to take home!

Admission free (funded through the Heritage Lottery Fund), donations towards the museum's development are very welcome!

The Museum Roadshow! For five weeks during the summer, Hertford Museum will be travelling to different venues delivering a new theme each week. From 10.30am-4pm, the 'Roadshow' will have activities for children, a mini exhibition with museum objects and a member of staff on hand to answer any questions. We're also teaming up with different organisations in the county who will be bringing more displays, these include Rockwatch, Hertford Archives and Local Studies and Hertfordshire Police. Look out for our special leaflets or contact the museum on 01992 582686.



Tues 28th July - 'Animal, Vegetable or Mineral?' at the Cowbridge Hall (near Hartham)

Tues 4th Aug - 'The Home Front' at Little Berkhamstead Village Hall

Tues 11th Aug - 'Dark Herts' (Crime and Punishment) at Hertford Heath Village Hall

Tues 18th Aug - 'Bones & Badger Hair-tooth care the Addis way!' at Bengoe Parish Church Hall

Tues 25th Aug - 'The Victorian House' at Hornsmill Community Centre

Hidden Hertford Walks. Free! Come and discover secret Hertford with a tour of the town and its surroundings. Walks start at 11am outside the Museum and last approx 1 hour. Numbers limited to 15 people per walk. These have proved hugely popular, so booking is essential. Phone: 01992 582686 for information and to secure a place. Next walks taking place: **Sunday 3rd May** -East Hertford, **Sunday 31st May**-Central Hertford. Check www.hertfordmuseum.org for further dates or contact the museum on 01992 582686.



What's on for Schools! Learning at Hertford Museum is still active despite the Museum being closed. There are lots of opportunities from hands-on object handling outreach sessions to fresh ideas on the delivery of the National Curriculum and topic specific weeks. There are lots of ways we can work together. Contact Eleanor Payne, Learning Officer on: eleanorp.hertfordmuseum@btconnect.com or call 01992 582686 / 585724 for more information on learning services. **Teachers!** Look out for our Learning Newsletter. We can email out to you!

Tours of the Stores Come behind the scenes and see the weird and wonderful objects tucked away in Hertford Museum's stores. Watch our volunteers at work in the conservation cleaning workshop. Tues 12th May & Tues 2nd June 10am-11am & 11am-12pm. It's a **Free event!** but booking is required in advance. Call 01992 582686. A map showing you how to find the stores will be sent with your tickets.

All outreach events are funded by our Heritage Grant, from the Heritage Lottery Fund.

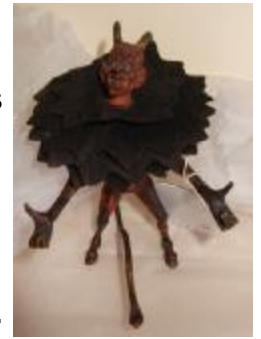


Supported by

The National Lottery
through the Heritage Lottery Fund



My Favourite Object... In each edition of the newsletter, a member of museum staff tells of their favourite object from the collection and why. This time it's the turn of Assistant Curator Ruth Stratton. Ruth's favourite object is this little Devil. We think he is a pen holder, hence his outstretched open arms for resting a pen. His black frilly ruff is made of felt and it is assumed this is for wiping an ink nib. He is currently being cleaned in our conservation cleaning workshop ready for display in the new museum galleries when we re-open next year. To come and see our volunteers cleaning objects such as his, join our **Tours of the Stores!** Details on page 2.



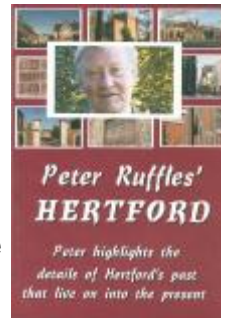
Going Digital! We are very lucky to have a volunteer, Brian Gravestock, who is currently digitising our vast glass plate negative and lantern slide collections. Once all the collection is on our database, it will be accessible to visitors on a user-friendly computer screen on the first floor when the museum re-opens in 2010. Thank you Brian!



And talking of photos..... Here is another photo from our archive. This is the Ebenezer Strict Baptist Chapel. It was opened for Worship in 1786 at the apex of the triangle which had its base as Cross Lane. (Holy Cross Lane linked Hertingfordbury Road with North Road as it does today) The two main roads converged at the apex of this triangle and merged into St. Andrew Street. It was pulled down for road widening and for Gascoyne Way in 1966/7. A newer building then took over nearby but this was demolished in 2002 and flats called 'Ebenezer Court' are in its place.

Hertford Museum's Super 100 Club was formed in June 2007 and currently has 95 members. Tickets are priced at £2 each and a draw is made monthly for a **super cash prize!** There is no limit to the number of tickets an individual can hold and the Club is open to anyone over the age of 18. All proceeds go towards the Museum's development and collections. Subscriptions are £24 per annum, June to May, paid in advance. Please join the Club, win and help to support your Museum!.

Shop news! We have a new addition to our shop stock! A DVD called 'Peter Ruffles' Hertford'. In this film, Peter takes the viewer around the town centre, telling the story of Hertford's past which lives on in the present. A perfect gift! Priced £6.99. See our online shop for details of this and many other Hertford items. If you live locally, you can arrange to pick items bought online from the rear of the museum. You can always purchase items from our Administrator Connie Taylor at the 'Soundbites' concerts at All Saints Church, every Wednesday lunchtime. It's a free event, starting at 12.30 for light lunches and a free concert from 1pm.



Whose Baby? Can anyone name the baby (*left*) in this photograph, snapped at County Day in the 1970s? Please email us!

RECEIVE OUR NEWSLETTER BY POST! Our newsletter is published in Jan, May and Sept. If you would like to receive a copy as soon as it is printed, please complete this form and enclose 3x 2nd class stamps.

Name:

.....

Address:

.....

.....
Please send to Hertford Museum, 18 Bull Plain, Hertford, HERTS SG14 1DT.

The newsletter is also available to view on the website www.hertfordmuseum.org.

Everyone needs Friends! The Friends of Hertford Museum (FOHM) meet the third Tuesday of the month and organise an exciting programme of talks and outings with a variety of guest speakers. Subjects have included Hertford ghosts to local clockmakers and churches to the archives at Hatfield House! Visitors are welcome along for just £2! Every year the FOHM organise a quiz, garden party and Christmas party. This year the quiz raised over £1,000 towards the Museum Development Project. It's just £10 or individual membership to the Friends' organisation, or £15 per family. FOHM members are always invited to special exhibition previews, help out with a variety of Museum events and activities and get involved with conservation and purchase of objects. To find out more about joining the FOHM, email: hertfordmuseum@btconnect.com. In May they will be going on a guided tour of St Leonard's Church in Bengeot. The FOHM events are regularly updated on the museum blog, accessible through the museum website: www.hertfordmuseum.org.

A BIG thank you to:

- The Salisbury Pool Charitable Fund for £100 to the development
- East Herts Summer Activities & Play Scheme Fund for £500 towards our summer activities
- The Herts Museums Small Grant Scheme for £700 towards items for our new Learning Space.
- The Nigel Copping Fund, Hertfordshire Community Foundation for the extremely generous donation of £10,000 towards the Development

We need your help! The museum has managed to raise nearly all of the partnership funding required to fulfil all of the aims of the development project. There is now only £31,000 needed and staff, volunteers and friends are organising more fundraising activities to try to raise some of this. You can **donate online** and there is a safe and secure 'donate online' service via the Charities Aid Foundation. All you need to do is click the red 'DONATE NOW' button on our website. Your donation can also be gift aided.

Other ways to help We have designed 3 different categories of how you can help Hertford Museum. We wanted to name these levels after something connected to the Museum and have chosen three bicycles in our collection:



The Penny Farthing - for donations of over £501

You will receive: Your name (if you would like) on a permanent plaque in the new entrance area of the museum. Your name (if you would like) in a permanent bound record of thanks to all those who have contributed to the development of the museum. Regular progress reports via our newsletter. A special 'behind the scenes' tour prior to the official opening. An invitation to the official opening of the new Museum in Spring 2010.



The Velocipede –for donations of £101-£500

You receive: Your name (if you would like) in a permanent bound record of thanks to all those who have contributed to the development of the Museum. Regular progress reports via our newsletter. An invitation to the official opening of the new Museum in Spring 2010.



The Trade Bicycle-for donations of £25-£100

You receive: Regular progress reports via our newsletter. An invitation to the official opening of the new Museum in Spring 2010.

If you can help support your local museum, you will have the satisfaction of knowing you have played a vital part in helping secure the future of your local museum for generations to come. Please fill in your details together with a cheque and send to the museum (address on the front page) or if you are local, we have a letterbox at the rear of the museum (near Starbucks).

Donation Form

I would like to donate to Hertford Museum's Development Fund £..... And enclose a cheque for that amount. Please Gift Aid my donation

My name:

Address: